



BAHIA PAPAGAYO

GUANACASTE

COSTA RICA

MAREA CONDOS



MAREA CONDOS

Introducing our Seaside Condos that were designed for those seeking a blend of comfort, relaxation, and sunset views over Playa Panamá. Perfect for individuals or couples looking to embrace beachside living with access to social activities and leisure.



COFFEE SHOP













MAREA CONDOS TYPE A

Interior 700 sqft (65 m²)

1 Bedroom

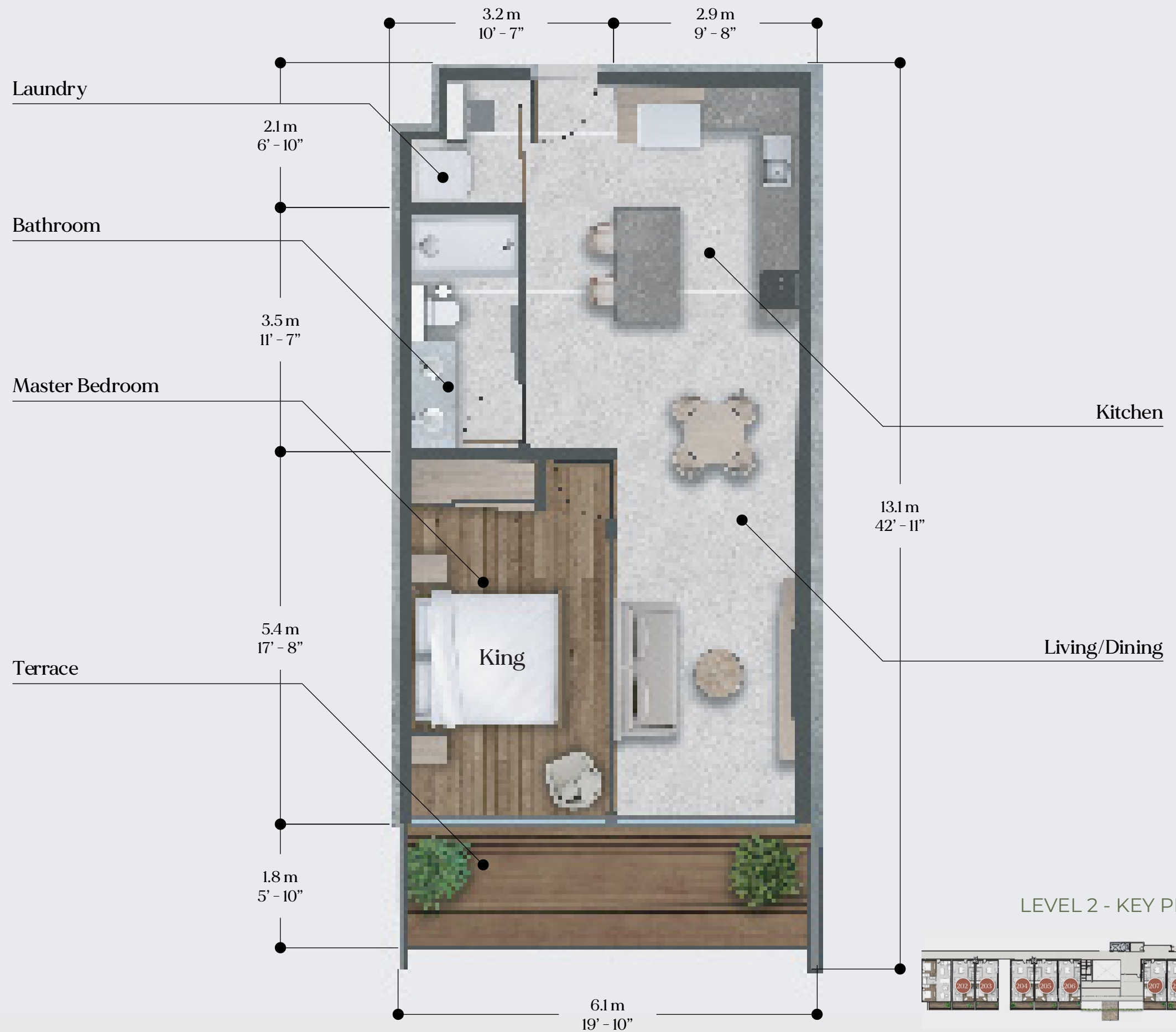
1 Bathroom

Storage Room 70 sqft (6.5 m²)

1 Designated Parking Space

Residence Features:

- Open floorplan
- Private terrace
- Porcelain flooring throughout
- Fully-furnished including accessories, lighting and ceiling fans
- King size bed with linens
- Queen size sofa bed in living room
- Contemporary kitchen with modern appliances and fixtures
- Kitchen island for entertaining
- Dining room for additional seating
- Quartz kitchen counter
- Bathroom vanity with double sink
- Laundry room and storage



LEVEL 2 - KEY PLAN



MAREA CONDOS TYPE B

Interior 700 sqft (65 m²)

1 Bedroom

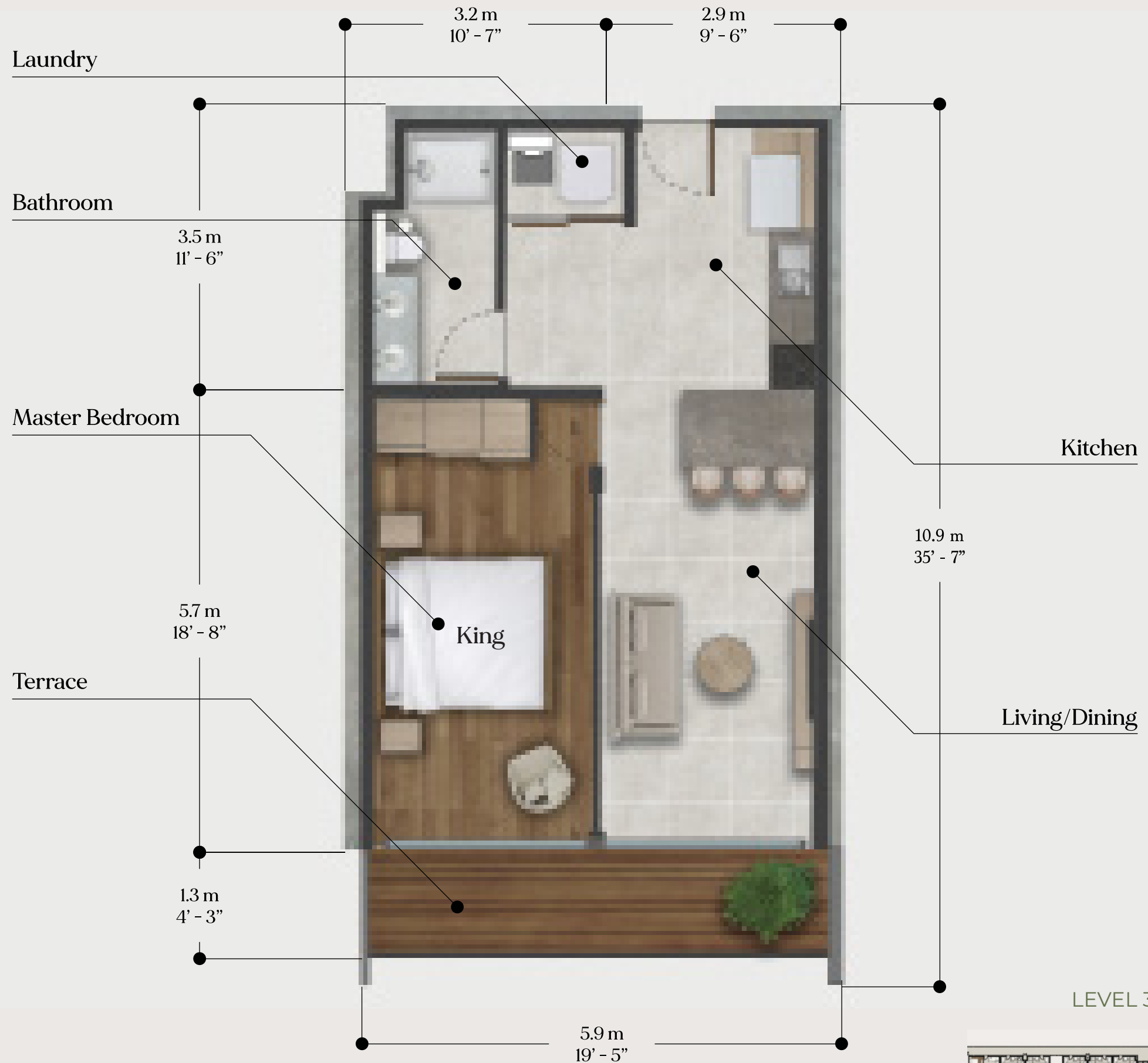
1 Bathroom

Storage Room 70 sqft (6.5 m²)

1 Designated Parking Space

Residence Features:

- Open floorplan
- Private terrace
- Porcelain flooring throughout
- Fully-furnished including accessories, lighting and ceiling fans
- King size bed with linens
- Queen size sofa bed in living room
- Contemporary kitchen with modern appliances and fixtures
- Quartz kitchen counter
- Bathroom vanity with double sink
- Laundry room and storage



LEVEL 3 - KEY PLAN

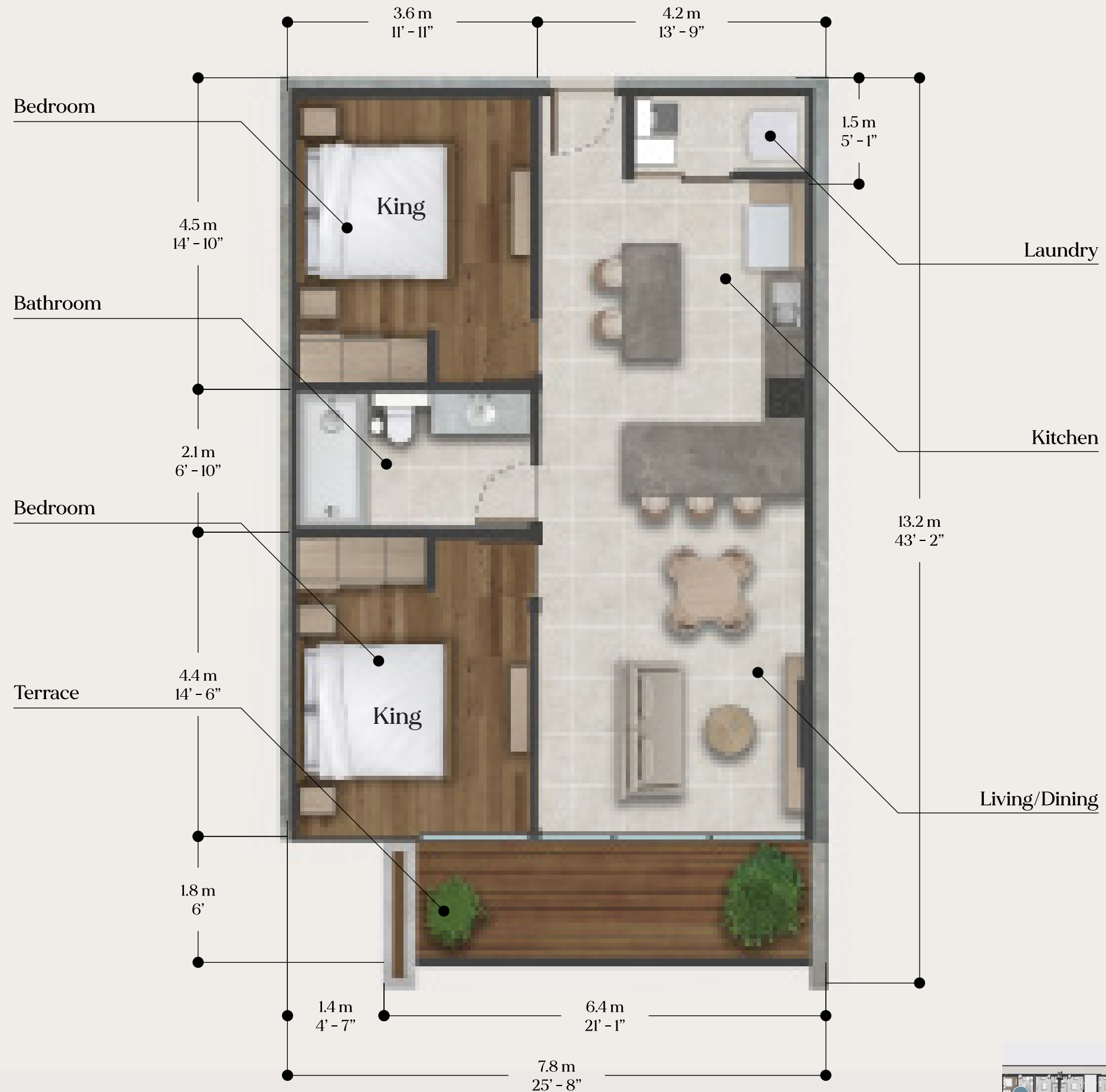


MAREA CONDOS TYPE C

Interior 872 sqft (81 m²)
 2 Bedrooms
 1 Bathroom
 Storage Room 70 sqft (6.5 m²)
 1 Designated Parking Space

Residence Features:

- Open floorplan
- Private terrace
- Porcelain flooring throughout
- Fully-furnished including accessories, lighting and ceiling fans
- King size bed in both bedrooms with linens
- Queen size sofa bed in living room
- Contemporary kitchen with modern appliances and fixtures
- Double kitchen island for entertaining
- Dining room for additional seating
- Quartz kitchen counter
- Laundry room and storage



LEVEL 2 - KEY PLAN



MAREA CONDOS TYPE D

Interior 872 sqft (81 m²)

2 Bedrooms

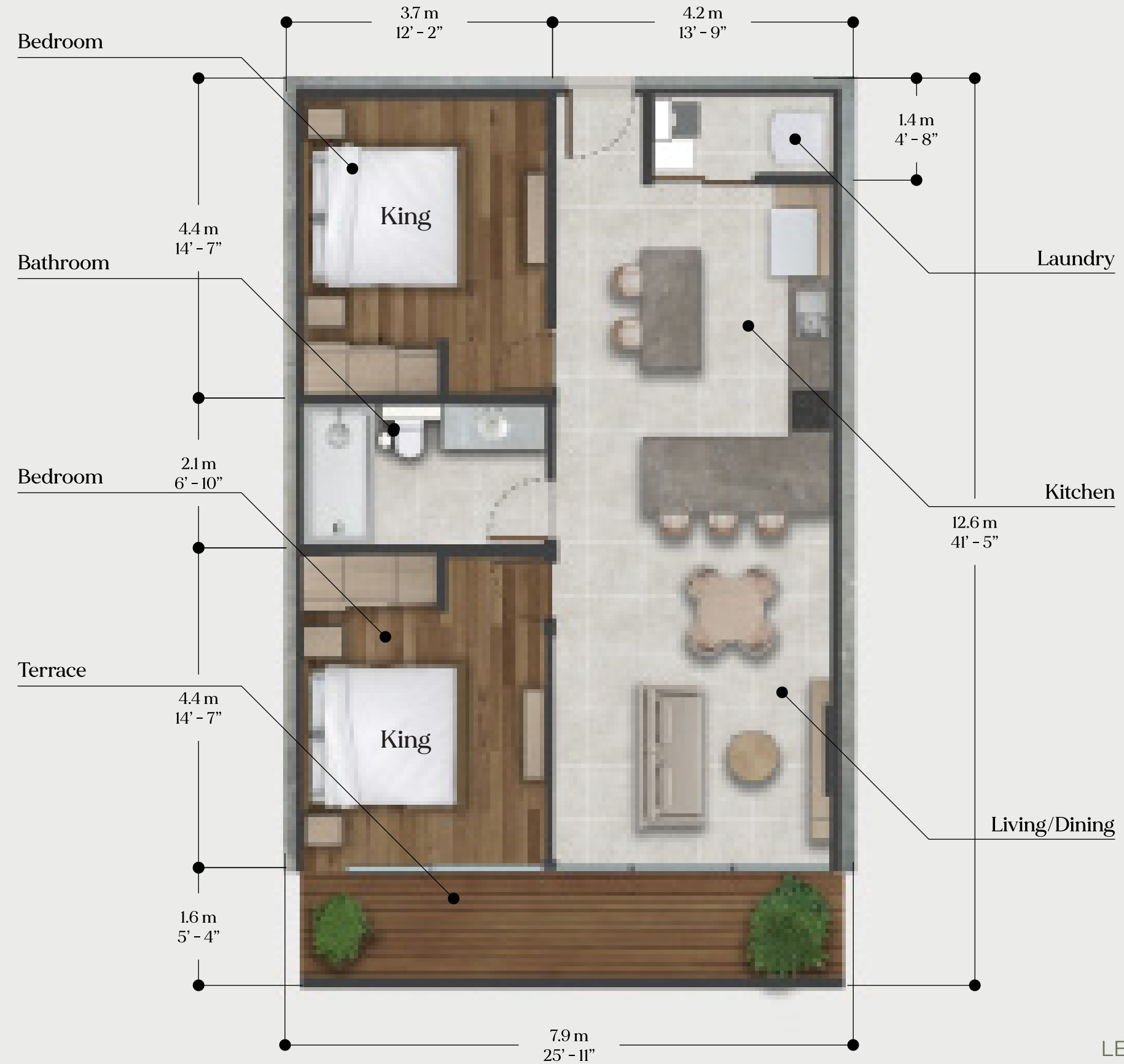
1 Bathroom

Storage Room 70 sqft (6.5 m²)

1 Designated Parking Space

Residence Features:

- Open floorplan
- Private terrace
- Porcelain flooring throughout
- Fully-furnished including accessories, lighting and ceiling fans
- King size bed in both bedrooms with linens
- Queen size sofa bed in living room
- Contemporary kitchen with modern appliances and fixtures
- Double kitchen island for entertaining
- Dining room for additional seating
- Quartz kitchen counter
- Laundry room and storage



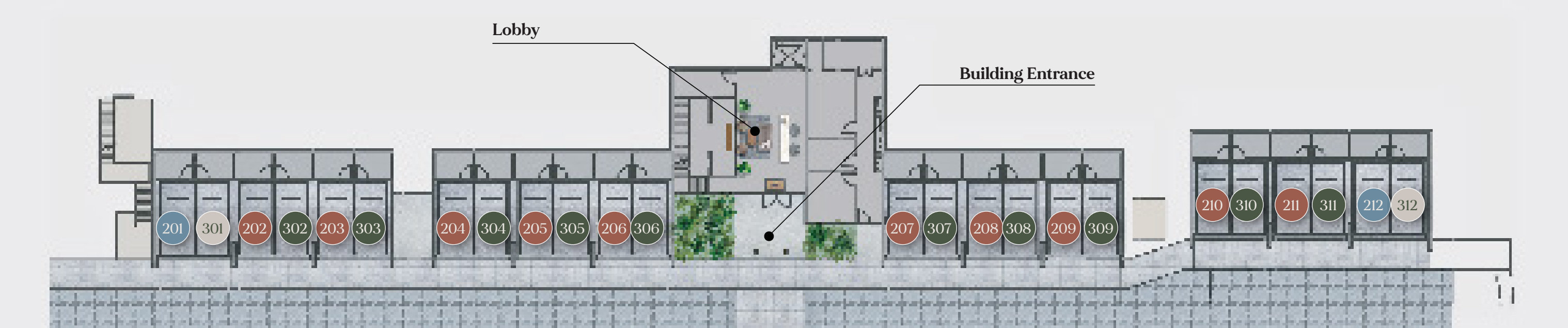
LEVEL 3 - KEY PLAN



MAREA CONDOS GROUND LEVEL

Parking & Storage

Each Seaside Condo includes a designated parking space along with a private 70 sqft (6.5 m²) storage area.



Condo Type Matrix

Level	Unit Type A (64,5m ²)	Unit Type B (64,5m ²)	Unit Type C (80,5m ²)	Unit Type D (80,5m ²)	Total
2	10 Units	--	2 Units	--	12 Units
3	--	10 Units	--	2 Units	12 Units
	10 Units	10 Units	2 Units	2 Units	24 Units



MAREA CONDOS

LEVEL 2

Unit	Type	Area (m2)	Area (sqft)	Bedrooms
201	C	81	872	2
202	A	65	700	1
203	A	65	700	1
204	A	65	700	1
205	A	65	700	1
206	A	65	700	1
207	A	65	700	1
208	A	65	700	1
209	A	65	700	1
210	A	65	700	1
211	A	65	700	1
212	C	81	872	2



Level	Unit Type A (64,5m2)	Unit Type B (64,5m2)	Unit Type C (80,5m2)	Unit Type D (80,5m2)	Total
2	10 Units	--	2 Units	--	12 Units



MAREA CONDOS

LEVEL 3

Unit	Type	Area (m2)	Area (sqft)	Bedrooms
301	D	81	872	2
302	B	65	700	1
303	B	65	700	1
304	B	65	700	1
305	B	65	700	1
306	B	65	700	1
307	B	65	700	1
308	B	65	700	1
309	B	65	700	1
310	B	65	700	1
311	B	65	700	1
312	D	81	872	2



Level	Unit Type A (64,5m2)	Unit Type B (64,5m2)	Unit Type C (80,5m2)	Unit Type D (80,5m2)	Total
3	--	10 units	--	2 units	12 Units





BAHIA PAPAGAYO

GUANACASTE

COSTA RICA

ON-SITE REAL ESTATE SALES GALLERY

Located in El Mangroove Hotel

Gulf of Papagayo, Guanacaste, Costa Rica

Sales@BahiaPapagayo.com

US/Canada: +1 (786) 292 6751 | Office: (506) 4105-8778

bahiapapagayo.com

Enigma Group

 GRUPO
LAGUNA

ARCHITECTURAL FLOORPLANS ARE IN PRELIMINARY DEVELOPMENT STAGE AND ARE SUBJECT TO CHANGE WITHOUT NOTICE. This is not intended to be an offer to sell nor a solicitation of offers to buy in any jurisdiction where prohibited by law, and your eligibility for purchase will depend upon your state or country of residency or where prior registration is required but has not been obtained. In our continuing effort to improve and maintain the high standard of the Bahía Papagayo development, the developer reserves the right to modify or change plans, specifications, features and prices without notice. Materials may be substituted with equivalent or better at the developer's sole discretion. All dimensions and sizes are approximate and are based on architectural measurements. Illustrations, renderings, photos and marketing materials provided are an artist's conception and are intended as a general reference only, not to be relied upon, and are subject to change. Please ask one of the helpful sales staff to reference the most recent set of architectural construction drawings for most up to date dimensions and other details. It may be advisable for you to consult an attorney or other knowledgeable professional who is familiar with real estate and a law in the country where this development is situated. © 2024 Desarrollo Bahía Papagayo BP Sociedad Anónima. All Rights Reserved.

